

PROGRAM

 **ICCEC**vienna2019

22-25 may 15th International Conference on Clinical Ethics Consultation

It's the Organization!

Clinical Ethics and Consultation at the
Intersection of Institutional Practice



iccec2019.org | [#iccec19](https://twitter.com/iccec19)





Denk
wer sich
WOHLFÜHLT, wird
Schneller GESUND.

Sonderklasse-Versicherung

Unsere Gesundheit ist die Basis für ein Leben voller Energie und Zuversicht. Mit der Sonderklasse-Versicherung sind Sie im Spital bestens umsorgt.

- Bei uns steigen Sie günstig ein und flexibel um.
- Wir fördern Ihren gesunden Lebensstil.
- Bei Gesundheitsfragen ist das Med PLUS24service für Sie da.

**UNIQA GeneralAgentur
Ecker & Ecker**

Nußdorferstraße 64, 1090 Wien
Tel.: +43 1 213 33-5341
E-Mail: viktor.ecker@uniqa.at

www.uniqa.at

Denk



Werbung

CONTENT

Summary	3
ICCEC 2019 Vienna.....	4
ICCEC Series.....	5
At a Glance	6
Keynote Addresses.....	14
Poster Exhibition	17
List of Posters	17
Conference Sub-Themes & Contributions.....	18
Contributors (in alphabetical order).....	23
Practical Information	26

ICCEC 2019 VIENNA

CONFERENCE THEME

“It’s the Organization! Clinical Ethics and Consultation at the Intersection of Institutional Practice” – ICCEC 2019’s conference theme – addresses the fact that clinical ethics takes place in a highly professional and institutionalized context.

Clinical ethics and consultation are a practical endeavor. They take place in an institutional setting, be it the hospital, nursing home, hospice, or mobile healthcare service. Practicing ethics in a clinical institution is different from reflecting on ethics in pure academia. It poses opportunities for ethically significant encounters with multiple stakeholders as well as challenges in facing the pressure of real-life engagement in an organization. ICCEC 2019 will focus on this intersection of practice and institution in clinical ethics and consultation.

To contribute in and to this context, clinical ethics may learn from other fields. ICCEC 2019’s program offers insights, exchange, and learning opportunities from psychology, healthcare management, organizational development, and jurisprudence that can enrich the practice of clinical ethics. The conference will cultivate this discourse through keynote lectures in general sessions, individual paper debates, poster presentations, panel discussions, and case studies. Keynote lectures will feature organizational experts and innovative thinkers stimulating clinical ethics.

ICCEC 2019’s mission is to provide attendees with the opportunity for exchange of expertise and collaboration in an institutional setting in order to improve the practice of clinical ethics for the good of the patient.

WELCOME TO VIENNA, AUSTRIA, FOR ICCEC 2019!

SUB THEMES

1. CLINICAL ETHICS AND THE ORGANIZATION

The healthcare organization is the place for practicing clinical ethics. Organizations are ethically relevant entities that shape this practice.

2. ORGANIZING CLINICAL ETHICS

Clinical ethics and consultation is an institution itself. It relies on structures and procedures that are an expression of this social system.

3. PRACTICING CLINICAL ETHICS AND HEALTHCARE MANAGEMENT

Healthcare organizations are governed by a management system that is different from the clinical or ethical systems. Nevertheless, they share the same area of institutionalized healthcare practice.

4. PRACTICING CLINICAL ETHICS AND JURISPRUDENCE

Healthcare has a legal framework. Ethicists must take this framework into account when practicing clinical ethics – not as legal experts but as facilitators who know about the merits and pitfalls of jurisprudence.

5. PRACTICING CLINICAL ETHICS AND ORGANIZATIONAL PSYCHOLOGY

When practicing clinical ethics, we have to deal with the whole person and group, not only with their rational heads. Insights from moral and social psychology can help improving this practice.

6. PRACTICING CLINICAL ETHICS AS CONSULTATION

Consultation services are at the heart of clinical ethics. Healthcare organizations rely on ethics support at the bedside and, sometimes, in the board meeting.

ICCEC SERIES

ICCEC – the International Conference on Clinical Ethics Consultation – is the most comprehensive annual meeting on clinical ethics worldwide. Each year, people from all continents come together to exchange insights from academic research and

practice in the field of clinical ethics. Founded in 2003 by Stella Reiter-Theil (Switzerland) and George Agich (USA), ICCEC has been held in different cities all over the world.

www.clinical-ethics.org

SCIENTIFIC REVIEW COMMITTEE

George Agich; Co-founder of the ICCEC series; Austin, TX, USA.

Silviya Aleksandrova-Yankulovska; Professor of Public Health, Medical University Pleven, Bulgaria.

Chris Gastmans; Head of Interfaculty Centre for Biomedical Ethics and Law, KU Leuven, Belgium.

Ralf Jox; Chair of Geriatric Palliative Care, CHUV Lausanne, Switzerland.

Mark Kuczewski; Director of the Neiswanger Institute for Bioethics, Loyola University Chicago, USA.

Bert Molewijk; Institute of Health and Society, University of Oslo, Norway.

Gerald Neitzke; Institute of History, Ethics, and Philosophy of Medicine, Hannover Medical School, Germany.

Stella Reiter-Theil; Co-founder of the ICCEC series; University Hospital Basel & Psychiatric University Hospital Basel, Switzerland.

Anne-Marie Slowther; Social Science and Systems in Health, Warwick Medical School, University of Warwick, United Kingdom.

Carol Taylor; Kennedy Institute of Ethics, Professor of Medicine and Nursing, Georgetown University, Washington, DC, USA.

Matthew Wynia; Director of the Center for Bioethics and Humanities, University of Colorado Anschutz Medical Campus, USA.

HOSPITALLER ORDER OF ST. JOHN OF GOD

ICCEC Vienna 2019 is hosted by the Austrian Province of the Hospitaller Order of St. John of God (short: “Hospitallers”, in German: “Barmherzige Brüder”).

The Hospitallers were founded in 1539 in Granada, Spain, by Juan Ciudad and came to Austria in 1605. Today, the Hospitallers are a worldwide organization, providing care for physically sick, mentally impaired, elderly, homeless, and drug-

dependent people in hospitals, rehabilitation centers, mobile services, hospices, nursing homes, and other care facilities.

The Hospitallers in Austria have established an extensive ethics program, expressing the Order’s central mission of hospitality with its core values of quality, respect, responsibility, and spirituality.

www.barmherzige-brueder.at



AT A GLANCE

Wednesday 22 May 2019						
	Park Congress 1	Bruckner				
13:00	Registration	Pre-Conference				
18:00	Desk open	Workshop				
Thursday 23 May 2019						
	Park Congress 1	Bruckner	Mahler	Brahms	Strauss	Gallery
08:00	Registration					
08:30	Desk open					
09:00	Opening					
09:30	Plenary 1					
10:00						
10:30						Coffee Break
11:00	Parallel 1.6	Parallel 1.1	Parallel 1.2	Parallel 1.3	Parallel 1.5	
11:30						Poster
12:00						
12:30	Parallel 2.6	Parallel 2.1	Parallel 2.2	Parallel 2.3	Parallel 2.5	
13:00						
13:30						Lunch Break
14:00						
14:30						
15:00	Parallel 3.6	Parallel 3.1	Parallel 3.2	Parallel 3.3	Parallel 3.5	Poster
15:30						Coffee Break
16:00						
16:30	Plenary 2					
17:00						Poster
17:30						
18:00						
18:30						
19:00	Mayor's Reception Vienna City Hall					
21:00						
Friday 24 May 2019						
	Park Congress 1	Bruckner	Mahler	Brahms	Strauss	Gallery
08:00	Registration					
08:30	Desk open					
09:00	Parallel 4.6	Parallel 4.1	Parallel 4.2	Parallel 4.3	Parallel 4.5	Poster
09:30						Coffee Break
10:00						
10:30	Plenary 3					Poster
11:00						Break
11:30						
12:00	Parallel 5.6	Parallel 5.1	Parallel 5.2	Parallel 5.3	Parallel 5.5	Poster
12:30						
13:00						Lunch Break
13:30						
14:00						
14:30	Parallel 6.6	Parallel 6.1	Parallel 6.2	Parallel 6.3	Parallel 6.5	Poster
15:00						Coffee Break
15:30	Poster					
16:00	Plenary 4					Poster
16:30						
17:00						
17:30						
18:00						
18:30						
19:00	Heurigen Evening					
22:30						
Saturday 25 May 2019						
	Park Congress 1	Bruckner	Mahler	Brahms	Strauss	Gallery
08:00	Registration					
08:30	Desk open					
09:00	Parallel 7.6	Parallel 7.1	Parallel 7.2	Parallel 7.3	Parallel 7.5	
09:30						Coffee Break
10:00						
10:30	Plenary 5					
11:00						
11:30	Closing					

THURSDAY. 23 MAY 2019

Thursday 23 May 2019						
Time	Session	Park Congress 1	Bruckner	Mahler	Brahms	Strauss
09:00-09:30	OPENING	Welcome				
		Conference Director Hospitalier Order of St. John of God ICCEC Series Founder				
09:30-10:30	PLENARY 1	KN1 Dignity and Decency: Personal Integrity and Decent Institutions <i>Clemens Sedmak</i>				
10:30-11:00		Coffee Break Gallery				
11:00-12:00	PARALLEL 1	Parallel 1.6 A110(CS) Novel and Innovative Treatments - Who Approves: REC or CEC? <i>Keymanthri Moodley, Sharon Kling</i>	Parallel 1.1 A94(PN) Fostering Quality of Ethics Support: NEON (A National Network on Ethics Support) as a Vehicle for Mutual Learning about CES Quality <i>Bert Molewijk, Laura Hartman, Eva van Baarle</i>	Parallel 1.2 A206(PP) How Can the Immediate Management of the Organisation Influence the Ethical Climate? <i>Cecilia Bartholdson, Margareta af Sandeberg, Pernilla Pergert</i>	Parallel 1.3 A132(PP) Revising the Euro-MCD Instrument for Evaluating Outcomes of Moral Case Deliberation - Normative Reflections on Empirical Findings <i>Janine de Snoo-Trimp, Mia Svantesson, Henrica de Vet, Bert Molewijk</i>	Parallel 1.5 A142(CS) IVF for Sick Mothers <i>Laura Winkler, Kristina Würth, Charlotte Wetterauer, Jan Schürmann</i>
		Parents' Request for Therapeutic Amputation of Their Child's Foot: An Oral Case Study Presentation in Divergent Views and Organisational Influences on Clinical Ethics Case Consultation <i>Anne Preisz, Lynn Gillam</i>		A216(PP) Behind the Numbers: Understanding Ethics Consultation Requests for Unrepresented Patients <i>Andy Kondrat, Virginia Bartlett</i>	A167(PP) Ethical Duties toward the Patient's Family: A Theoretical Framework and the Contribution of Clinical Ethics Consultation <i>Ralf J. Jox, Anne Dalle Ave, Marion Fischer, Samia A. Hurst</i>	A143(CS) Facilitating Decision Making When the Patient's Autonomy is Compromised <i>Kurt Smidt-Jernstrom</i>
		A116(CS) 'You Can Give Them Wings to Fly': A Qualitative Study on Values-Based Leadership in Health Care <i>Yvonne Denier, Lieve Dhaene, Chris Gastmans</i>		A234(PP) Ethical Justification for Strike by Doctors in Kenya <i>Stephen Ombok, Muhudhia, Ames Dhai, Yolande Giudozzi</i>	A155(PP) A Seat at the Table: Exploring the Intersection of Race and Profession in Clinical Ethics Consultation <i>Hellen Ransom</i>	A81(CS) Ethics for Junior Doctors in Emergency Medicine <i>Carolina Spruyt</i>
12:00-12:30					A163(PP) To Err is Human: Mistakes in Clinical Ethics Consultation <i>James Hynds, Joseph Raho</i>	
Break						

THURSDAY. 23 MAY 2019

Thursday | 23 May 2019

Time	Session	Park Congress 1	Bruckner	Mahler	Brahms	Strauss
12:30-13:30	PARALLELE 2	Parallel 2.6 A149(PN)	Parallel 2.1 A139(PP)	Parallel 2.2 A63(PN)	Parallel 2.3 A134(PP)	Parallel 2.5 A104(PN)
		The Ethical Obligation to Find Family of the So-Called "Unrepresented" Patient <i>Monica Gerrek, Oliver Schirokauer, Steven Radwany, Jane Penttila</i>	Does Ethics Consultation Simulation Impact Trainees' Ability to Evaluate other Clinical Ethicists? <i>Katherine Wasson, William Adams</i>	Conflict on the Technology Cutting Edge: ECMO, CentriMags TM and the Definition of Death. Organizational Policy on End-of-Life Conflicts & Moral Distress <i>Norine McGrath, Evan DeRenzo, Nimesh Shah, Karen Jerome</i>	Translating Clinical Ethics into Caring Practices in an Institution for the Intellectually Disabled: Empirical and Methodological Insights <i>Janine de Shoo-Trimp, Jelle van Gurp, Karen Schipper, Bert Molewijk</i>	Ethics Consultation in U.S. Hospitals: Current Practices and Perspectives of EC Practitioners <i>Ellen Fox, Marie-Eve Bouthillier, Ralf J. Jox</i>
			Is Ethical Climate an Outcome of Moral Case Deliberation? – Evaluation of Quality in Practice in the Eyes of Managers <i>Mia Svantesson, Marit Silen</i>		Systematic Review of Tools to Assess the Quality of Ethics Consultations <i>Nicholas Yue Shuen Yoon, Yun Ting Ong, Lalit Krishna</i>	
			Metrics of Ethics: Translating the Narrative of Healthcare Ethics Consultation the C-Suite <i>Michael Jeong</i>		Applies to Oranges: Why Share Data in Health Care Ethics Consultation <i>Kelly Harris, Thomas Cunningham, D. Micah Hester, Joseph Fanning, Ahra Kim</i>	
			The Art of Being Directive without Being Directive: Requirements and Demands on Ethical Expertise in Psychiatric Clinical Ethics Consultation – Preliminary Results <i>Joschka Haltaufderheide, Jakob Gather, Jan Schildmann, Georg Juckel, Jochen Vollmann</i>		Impact of Collusion in the Implementation of "Terminal Discharges" from an Acute Hospital and the Role of Welfare Model to Achieve Transparency of Care <i>Sushma Shivananda, Yung Ying Tan, Lalit Kumar Radha Krishna, Ying Pin Toh</i>	

Lunch Break | Gallery

13:30-15:00

THURSDAY. 23 MAY 2019

Thursday | 23 May 2019

Time	Session	Park Congress 1	Bruckner	Mahler	Brahms	Strauss
15:00-16:00	PARALLELE 3	Parallel 3.6 A153(PP) Ethics Support Regarding Ethical Challenges when Allocating Hospital Beds: Insights from Daily Allocation Meetings in a Dutch Hospital <i>Bert Molewijk, Janine Trimp, Laura Hartman</i>	Parallel 3.1 A82(PN) What Can We Offer with the Resources Available for Clinical Ethics Support? Insight from 4 Services in Europe <i>Stella Reiter-Theil, Renzo Pegoraro, Anne Slowther, Jürgen Wallner</i>	Parallel 3.2 A232(PP) Organizational Ethics and Assisted Dying: Helping Hospitals to Implement Morally Controversial Legislation <i>Danielle Ko, Rosalind McDougall, Barbara Hayes, Bridget Pratt</i>	Parallel 3.3 A230(PP) Reconciling Business and Health Care Ethics in Practice: The Case of For-profit and Non-profit Nursing Homes <i>Floren Kruse, Stef Groenewoud, Patrick Jeurissen</i>	Parallel 3.5 A141(WS) A Novel Approach to Training Your Ethics Committee <i>Katherine Wasson, E. David Cook</i>
		A127(PP) Aggressive Behaviour by Parents to Health Care Staff: Is "Zero Tolerance" the Answer? <i>Lynn Gilliam, Anusha Hingalagoda, Clare Delany</i>		A210(PP) The Relationship between Ethics and Law: The Importance of Values <i>Axel Liégeois</i>	A240(PP) Healthcare Organizations, Quality Improvement, and Clinical Ethics <i>George Agich</i>	
		A148(PP) Leveraging an Institutional Project Management Process to Optimize Breadth & Impact of Clinical Ethics <i>Georgina Morley, Cristie Horsburgh</i>		A178(PP) A Confucian Ethical Code to Tackle Challenges in Pricing <i>Gabriel Hong Zhe Wong, Teck Chuan Voo</i>		
		A151(PP) How Can Clinical Ethics Support Contribute to Just Culture in Health Care Organizations? <i>Laura Hartman, Iris Wallenburg, Roland Bai, Guy Widdershoven</i>		A184(PP) Why Ethics Consultants Should Break the Law <i>Peter Koch</i>		
16:00-16:30		Coffee Break Gallery				
16:30-17:30	PLENARY 2	KN2 The Pope Francis Formula — For Healthy and Ethical Leadership! <i>Erny Gillen</i>				
19:00-21:00		Mayor's Reception Vienna City Hall				

FRIDAY. 24 MAY 2019

Friday | 24 May 2019

Time	Session	Park Congress 1	Bruckner	Mahler	Brahms	Strauss
09:00-10:00	PARALLEL 4	Parallel 4.6 A202(CS)	Parallel 4.1 A152(PP)	Parallel 4.2 A133(CS)	Parallel 4.3 A190(PP)	Parallel 4.5 A93(PN)
		It Takes an Institution: Examining the Institution as Surrogate Decision Maker for the "Patient Alone." <i>Adira Hulkower</i>	The Elephant in the Room for Clinical Ethics Trainee Programs: What Makes a Program Worthwhile? <i>Margot Eves, Cristie Horsburgh, Joshua Crites, Kathryn Weise</i>	One Too Many: Is Foetal Reduction the same as Abortion? <i>Mei Yoke Chan, Kumudhini Rajasegaran</i>	Impact of International Patient Programs on U.S. PICUs: Conflicting Organizational Duties? <i>Emily Berkman, Jonna Clark, Douglas Diekema, Mithya Lewis-Newby</i>	Does Age Matter? Clinical Ethics Case Review of Surrogate Decision-making from the Womb to Advanced Age <i>Laura Webster, Cynthia Coleman, David Mann</i>
		A17(CS) Between a Rock and a Hard Place - Medical Repatriation of a Critically Ill Tourist <i>Eunice Chua</i>	A173(PP) It's the System! - What Preventive Ethics Can Contribute to the Quality of a Health Care Organization <i>Jan Schürmann, Stella Reiter-Theil</i>	A75(CS) Patient Autonomy - A Human Right with Moral Implications <i>Marianna Klungland Bahus, Pål Friis, Terje Mesel</i>	A203(PP) Strengthening Organizational Ethical Culture from the Ground Up: Tailored Preventive Ethics Rounds in a Quaternary Children's Hospital <i>Naomi Laventhal, Salomeh Salari, Katherine Feder, Janice Finn</i>	
		A247(PP) Relational Leadership in Healthcare Organisations <i>Louise Campbell</i>	A198(PP) Implementing Clinical Ethics: Expectations and Realities <i>Cordula Brand, Uta Müller, Christiane Burmeister, Robert Ransisch</i>	A130(PP) Law, Policy and the Role of Clinical Ethics Committees <i>Lisa Mitchell, Giuliana Fuscaldo</i>	A217(PP) Cultivating Character: Mapping Organisational Factors that Influence the Character of Surgeons in Training <i>Pleuntje Versteegen, Jos J. Kole, Stef Groenewoud, Frank Van den Hoogen</i>	
		A129(PP) Mission and Method: Clinical and Organizational Ethics from a Multi-Institutional Perspective <i>Charlotte Harrison, James Sabin</i>	A241(PP) Clinical Ethics Informatics <i>John Frye</i>		A224(PP) Ethics Consults in Pediatric Intensive Care Units (PICU): Who, What, Where, When and Why? <i>Rebecca Propper, Kelly Harris, Jessica Turnbull, Joseph Fanning, Ahn Kim</i>	
10:00-10:30				Coffee Break Gallery		
10:30-11:30	PLENARY 3	KN3 A Needle in an Ethical Haystack: A Virtue Ethics Analysis <i>Ann Gallagher</i>				
11:30-12:00				Break		

FRIDAY. 24 MAY 2019

Friday | 24 May 2019

Time	Session	Park Congress 1	Bruckner	Mahler	Brahms	Strauss
12:00-13:00	PARALLELE 5	Parallel 5.6 A223(PP) Establishing a Clinical Ethics Service in an Australian Tertiary Hospital: Opportunities and Challenges Created by the Introduction of Voluntary Assisted Dying <i>Danielle Ko, Rosalind McDougall</i>	Parallel 5.1 A36(PN) Comparing and Contrasting Clinical Ethics Support and Clinical Ethics Consultation: Engaging Responsibility via Institutional Roles and Clinical Activities <i>Stuart Finder, Mark Bliton, Bert Molewijk, Jochen Vollmann</i>	Parallel 5.2 A208(PP) Institutional and Individual Responsibility in Health Care Organizations: Ethical and Legal Aspects <i>Uta Müller</i>	Parallel 5.3 A114(CS) So, Do We Really Need Doctors Anyway? <i>Giuliana Antolovich, Kate Milner, Zoe McCallum, Clare Delany</i>	Parallel 5.5 A85(PN) The Relationship of Lawyers and Bioethicists in the Hospital Setting <i>David Sontag, Charlotte Harrison, Joshua Abrams, Michael leong</i>
		Parallel 5.7 A157(PP) Ethics from the Back Seat: Managing Conflict Between Ethical Action and Organizational Interests <i>Janet Matek</i>		Parallel 5.4 A211(PP) Duty of Care versus Duty of Confidence in Genetics: A Legal and Moral Tension <i>Hannah Cagney, Jeremy Wickins</i>	Parallel 5.4 A204(CS) When Does the "Why" Matter? Considering "Intent" in Clinical Ethics Consultation <i>Adira Hulkower</i>	
		Parallel 5.8 A160(PP) Adding Ethics to the Ethics Policy <i>Colleen Gallagher</i>		Parallel 5.5 A218(PP) Ethical Challenges in Telecare: Reviewing Moral and Legal Frameworks for Remote Clinical Care <i>Lukas Chandler</i>	Parallel 5.5 A144(CS) Gender Assignment/Reassignment by Proxy: Special Ethical Considerations for Shared Decision-Making and Substituted Judgment in Transgender Healthcare <i>Cynthia Coleman, David Mann, Laura Webster</i>	
		Parallel 5.9 A168(PP) Which Language Should Clinical Ethics Use? Reflecting on the Interaction of Ethics with Institutional and Professional Culture <i>Raif J. Jox</i>		Parallel 5.6 A138(PP) Governance of Automated Image Analysis and Related Artificial Intelligence Applications in Healthcare <i>Calvin W. L. Ho, Peter Novitzky, Derek Soon, Gabriel Hong Zhe Wong</i>		

Lunch Break | Gallery

13:00-14:30

SATURDAY. 25 MAY 2019

Saturday | 25 May 2019

Time	Session	Park Congress 1	Bruckner	Mahler	Brahms	Strauss
09:00-10:00	PARALLEL 7	Parallel 7.6 A26(CS) Making the (Business) Case for Clinical Ethics Support Services: Selling Ethics or Selling Out? <i>Laura Machin</i>	Parallel 7.1 A146(PP) Ethics Rounds and Clinical Ethics Consultation - Two of a Kind? <i>Dagmar Schmitz, Alexander Kersten</i>	Parallel 7.2 A199(PP) Good Ethics Consultation in Chronic Illness - Overcoming Epistemic Injustice <i>Tatjana Weidmann-Hügler</i>	Parallel 7.3	Parallel 7.5 A169(PP) Defining the Role of Clinical Ethics Consultation in Pre-Transplant Recipient Assessment Practices <i>Alessandra Agnese Grossi, Federico Nicoli, Mario Picozzi</i>
		A97(CS) Navigating Internal and External Goods: Who is Responsible for His Care? <i>Joseph Fanning</i>	A137(PP) To Include or not to Include Patient Perspectives in Case Consultation Practices: Organizational Preference or Necessity? <i>Marleen Eijkholt</i>	A222(PP) The Practice of Balancing in Clinical Ethics Case Consultation <i>Lynn Gillam, Cade Shadbolt, Rosalind McDougall</i>		A128(PP) A Person-centered Point-of-care Tool for Clinical Ethics Consultations <i>Lalit Krishna, Ying Pin Toh</i>
		A179(PP) "Are We Still Talking about Charlie Gard?": Exploring Organizational Responses to Ethical and Cultural Fallout <i>Bryanna Moore, John Lantos</i>	A238(PP) Doing Clinical Ethics Collaboration Differently: A Working Event to Innovate Clinical Ethics Consultation <i>Margot Eves, Jane Jankowski, Hilary Mabel, Paul Ford</i>	A19(CS) To Block or Not to Block? The Role of Puberty Blockers in a Young Person with a Non-binary Gender Identity <i>Ken Pang, Michelle Telfer, Lauren Notini, Rosalind McDougall</i>		A136(PP) Moral Deliberation in Bioethics: Method and Virtues <i>David Lorenzo, Jose J Ordoñez</i>
			A229(PP) Complicity in Clinical Ethics? The Role of Clinical Ethicists in a Hospital Committee on the Uninsured <i>Ralf J. Jox, Samia A. Hurst, Anne Dalle Ave, Marion Fischer</i>			
10:00-10:30						
10:30-11:30	PLENARY 5	KN5 Towards a virtuous clinic? The Dynamics of Character and Ethical Climate within the Clinical Organisation <i>Jos J. Kole</i>				
11:30-12:00	CLOSING	Farewell Announcement of ICCEC 2020 Conference Director ICCEC Series Founder				

KEYNOTE ADDRESSES



CLEMENS SEDMAK

Professor of Social Ethics,
University of Notre Dame (USA)

Dignity and Decency: Personal Integrity and Decent Institutions

The talk outlines (a) a profile of decent institutions with a special emphasis on the clinical context and on hospitals, (b) a nuanced understanding of personal integrity in an institutional context, (c) a number of examples that would shed light on the question of how to conceive

of the interaction of person and institution. The main concern of the contribution is a thick and robust understanding of human dignity within a clinical setting; which are the minimum standards that must not be undercut? Which are appropriate guidelines to safeguard human dignity?

Plenary Session 1

Thursday, 23 May 2019, 9:30 - 10:30



ERNY GILLEN

Moral Factory S.à.r.l,
Grand-Duchy of Luxembourg

The Pope Francis Formula: For Healthy and Ethical Leadership!

Just as an unhealthy lifestyle can lead to disease, so, too, can a poorly managed hospital lead to unhealthy outcomes. Leading a life and leading a hospital both have practical consequences and carry moral weight. Ethics understood as a critical reflection of human and technically prolonged behavior, especially in the age of artificial intelligence, can't be separated from leadership.

Looking for healthy leadership models, Erny Gillen will unfold a specific and comprehensive formula able to create a semantic field of dialogue bringing patients, medical doctors, caregivers, social and pastoral workers together. The elements for the formula derive from Francis Bergoglio's professional life and work as a young Jesuit in sinister contexts and as a pope leading a heavily damaged institution with hope and spiritual uprightness. The first parts of the handy formula address tensions within people and encourages them to keep going by addressing time and unity as pacemakers in blocked positions

and conflict situations. The second parts of the method address the inner tensions within therapeutic or organizational approaches and encourages an honest culture of trial and error by accepting realities and the whole as pacemakers, when ideas or parts prevail.

Systematically implemented, the formula supports people and hospitals crossing long established borders and discovering new land. Connecting our past and our future is an urgent humanitarian challenge in an induced ambience of disruptive technics and of the permanent present tense. The Francis Formula is a great remedy against isolation and faint, as it accepts the open future as a normal challenge for our freedom, responsibility and history. It offers a breakthrough method for healthy and ethical leadership — personally and institutionally! Erny Gillen's unique translation of the Formula into his copyrighted Ethical Leadership Octahedron brings a smart pedagogical tool at the bedside of patients, as well as at the hands of hospital managers and ethicists.

Plenary Session 2

Thursday, 23 May 2019, 16:30 - 17:30



ANN GALLAGHER

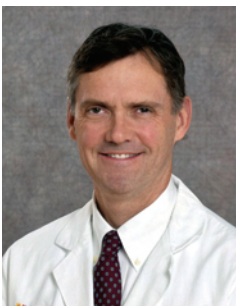
Professor of Ethics and Care,
International Care Ethics Observatory, University of Surrey (UK)

A Needle in an Ethical Haystack: A Virtue Ethics Analysis

This presentation is based on an anonymised case, discussed at a Clinical Ethics Committee in the UK. The case involved uncertainty following a clinician receiving a needle-stick injury. The patient ('Laura'), who was dying and unresponsive and was known to be HIV+. Her hepatitis status was unknown. One of Laura's family (Paul) was aware of her HIV status but other family members were not aware. The clinician wanted to know Laura's hepatitis status and requested that

blood was taken from the patient for testing. Legal and professional guidance on this issue pointed in different directions. What should the team do? Should the family be asked to leave the patient so that blood can be taken? Should the situation be explained to Paul? What policies did, and should, the organisation have in place to respond to such an eventuality? The case will be analysed using the ETHICS deliberative framework and a virtue ethics approach.

Plenary Session 3
Friday, 24 May 2019, 10:30 - 11:30



GEORGE E. HARDART

Associate Professor of Pediatrics and Bioethics,
Columbia University Medical Center (CUMC), New York (USA)

The Challenges of Educating Healthcare Ethics Consultants: Setting the Bar and Shooting for the Stars

The field of healthcare ethics consultants (HCEC) continues to evolve and mature as a professional discipline, but the road has not always been straight. The driving forces for professionalization have included: to maintain and improve the quality of ethics consultation; to elevate the status of HCEC in the healthcare community and institutions through widely accepted certification standards; and to justify financial support of HCECs. Despite the limitations associated with basing certification on a multiple-choice examination, this is the current path chosen by the American Society for Bioethics and Humanities. Time will tell if this approach to HCEC certification achieves widespread acceptance and utilization, but this approach certainly presents educators with critical challenges.

As academic leaders and organizations strive to establish clear standards for minimum competency,

there is also a recognition that we need to continue to support and nurture the rich, multifaceted and nuanced practice skills needed to excel in the field.

There have been challenges along the way: how to continue to recognize and honor the diversity of our multidisciplinary field with origins in law, medicine, pastoral care, philosophy and more; how to avoid the pitfalls of "teaching to the test"; how to manage the financial costs of both certification and education in an environment where HCECs are often not paid for their services; and how to truly foster excellence in the field, for new trainees as well as for experienced consultants.

In this address, we will discuss the path that has brought us where we are, the challenges that professionalization poses for educators, and potential strategies for our academic community and organizations to engage in achieving our goals.

Plenary Session 4
Friday, 24 May 2019, 16:30 - 17:30



JOS J. KOLE

Assistant Professor, Scientific Center for Quality of Healthcare,
Radboud University Medical Center, Nijmegen (The Netherlands)

Towards a Virtuous Clinic? The Dynamics of Character and Ethical Climate within the Clinical Organization

My hospital wants to express hospitality towards its patients. Hospitality is a virtue. Can a clinic, as organisation, be virtuous? If so, in which (non-trivial) sense? And why does it matter?

The leading interrelated questions of this plenary session are:

- Can virtue ethics contribute to clinical ethics? If so, how?
- How does the cultivation of virtues (character) of diverse members of the clinical community (patients, physicians, nurses, managers) relate to the ethical climate of the clinic as organisation and institution? and
- Can and should an organisation be virtuous in order to create a climate that enables members of the clinical community to flourish? If so, how?

The goal of trying to answer these questions is to explore how virtue ethics can contribute to the quality of care within the clinic and the wellbeing and flourishing of the diverse members of the clinical community – not only of patients, but also of healthcare professionals who may suffer from moral

distress, compassion fatigue, heavy workload, loss of job satisfaction, and risk of burn out.

Quality of care and the wellbeing and flourishing of the members of the clinical community may be either undermined or stimulated by how the clinic is organized. Thus, an organisation that focuses one-sidedly on managing (quality of) care through protocols, evidence-based guidelines, and procedures runs the risk of thwarting patient-centred care while neglecting the practical wisdom of healthcare professionals. An organisation that focuses on commercial cost-effective management through output measures and performance indicators may undermine the intrinsic motivation of its professionals, that enables them to provide compassionate care.

Perhaps a ‘virtuous clinic’ is able to stimulate person-centred, compassionate care for patients, while its professionals stay healthy and ‘happy’? Such a clinic would foster a positive clinical ethical climate and assist its patients and professionals to cultivate virtues and character.

This keynote session will not take the usual form of a lecture. The audience is invited to join in an interactive exploration of this new theme.

Plenary Session 5
Saturday, 25 May 2019, 10:30 - 11:30

POSTER EXHIBITION

Thursday, 23 May 2019	08:00 - 10:30 hrs	Gallery	Preparation for poster exhibition
	10:30 - 18:30 hrs	Gallery	Poster exhibition
Friday, 24 May 2019	09:00 - 17:30 hrs	Gallery	Poster exhibition
	16:00 - 16:30 hrs	Plenary	Poster award

LIST OF POSTERS

When Cancer Kids Say “No!” Capacity, Oncology and Consent (A103)
Philip Crowell

10 Years of Clinical Ethics Consultation at the University Hospital Innsbruck (A125)
Ursula Riccabona, Verena Stühlinger

How Can Psychological Concerns be Smoothly Introduced into Clinical Ethics Education in Healthcare Organizations? (A135)
Kenji Hattori

Challenges in the Management of Endoscopic Procedures (A145)
Andreea Luiza Palamaru, Elena Toader, Tudor-Stefan Rotaru

Transparency and Confidentiality: Redesigning Clinical Ethical and Legal Consultation (A147)
Dorothea Touwen, Martine De Vries, Marleen Eijkholt

Mr. B Takes a Fall (A162)
Malek Janet

Ethics in Clinical Pastoral Education (A164)
Paul Cummins, David Fleenor, Jo Hirschmann

Doctor's Duty to Advise - the Singapore Experience (A170)
Hsi-Yen Loke, Ming Xian Grace Chew

When Identities Intersect: Adapting an Intersectional Lens into Clinical Ethics Consultation Frameworks (A214)
Claire Horner, Sophia Fantus, Lisa Campo-Engelstein

Evaluation of Case Consultations: Lessons from 192 Consultation Protocols at Hannover Medical School (A172)
Gerald Neitzke, Marcel Mertz, Katja Freund

Scoping Review of the Factors of an Effective Clinical Ethics Consultation (A176)
Nicholas Yue Shuen Yoon, Yun Ting Ong, Lalit Krishna

Systematic Review of Core Training requirements and Curricula of CEC members (A177)
Yun Ting Ong, Yun Ting Ong, Lalit Krishna

Dealing with Medical Error: A Wobbly Bridge between Clinical and Organizational Ethics (A183)
Kurt Schmidt

The Dark Wood of Peer Review (A209)
Frederick Paola, Robert Walker

Ethical Expertise and Evaluation of Clinical Ethics Support Services (CESS) (A231)
Jan Schildmann, Joschka Haltaufderheide, Stephan Nadolny, Jochen Vollmann

The Effect of Role Models on the Moral Behaviours and Attitudes of Medical Students (A242)
Bisma Hussain

A Faith-Based Moral Challenge in Ethics Consultation (A88)
John Moskop

CONFERENCE SUB-THEMES & CONTRIBUTIONS

CLINICAL ETHICS AND THE ORGANIZATION

Abstract ID	Title	Session
A110(CS)	Novel and Innovative Treatments – Who Approves: REC or CEC?	Parallel 1.6
A115(CS)	Parents’ Request for Therapeutic Amputation of Their Child’s Foot: An Oral Case Study Presentation in Divergent Views and Organisational Influences on Clinical Ethics Case Consultation	Parallel 1.6
A116(CS)	‘You Can Give Them Wings to Fly’: A Qualitative Study on Values-Based Leadership in Health Care	Parallel 1.6
A127(PP)	Aggressive Behaviour by Parents to Health Care Staff: Is “Zero Tolerance” the Answer?	Parallel 3.6
A129(PP)	Mission and Method: Clinical and Organizational Ethics from a Multi-Institutional Perspective	Parallel 4.6
A144(CS)	Gender Assignment/Reassignment by Proxy: Special Ethical Considerations for Shared Decision-Making and Substituted Judgment in Transgender Healthcare	Parallel 5.3
A148(PP)	Leveraging an Institutional Project Management Process to Optimize Breadth & Impact of Clinical Ethics	Parallel 3.6
A149(PN)	The Ethical Obligation to Find Family of the So-Called “Unrepresented” Patient	Parallel 2.6
A151(PP)	How Can Clinical Ethics Support Contribute to Just Culture in Health Care Organizations?	Parallel 3.6
A153(PP)	Ethics Support Regarding Ethical Challenges when Allocating Hospital Beds: Insights from Daily Allocation Meetings in a Dutch Hospital	Parallel 3.6
A157(PP)	Ethics from the Back Seat: Managing Conflict Between Ethical Action and Organizational Interests	Parallel 5.6
A160(PP)	Adding Ethics to the Ethics Policy	Parallel 5.6
A164(PO)	Ethics in Clinical Pastoral Education	Poster-Display
A168(PP)	Which Language Should Clinical Ethics Use? Reflecting on the Interaction of Ethics with Institutional and Professional Culture	Parallel 5.6
A17(CS)	Between a Rock and a Hard Place - Medical Repatriation of a Critically Ill Tourist	Parallel 4.6
A175(PP)	Buddhist Care at the Buddha Shed of Hospital	Parallel 7.5
A179(PP)	"Are We Still Talking about Charlie Gard?": Exploring Organizational Responses to Ethical and Cultural Fallout	Parallel 7.6
A183(PO)	Dealing with Medical Error: A Wobbly Bridge between Clinical and Organizational Ethics	Poster-Display
A190(PP)	Impact of International Patient Programs on U.S. PICUs: Conflicting Organizational Duties?	Parallel 4.3
A202(CS)	It Takes an Institution: Examining the Institution as Surrogate Decision Maker for the “Patient Alone.”	Parallel 4.6
A203(PP)	Strengthening Organizational Ethical Culture from the Ground Up: Tailored Preventive Ethics Rounds in a Quaternary Children’s Hospital	Parallel 4.3
A209(PO)	The Dark Wood of Peer Review	Poster-Display

Abstract ID	Title	Session
A217(PP)	Cultivating Character: Mapping Organisational Factors that Influence the Character of Surgeons in Training	Parallel 4.3
A223(PP)	Establishing a Clinical Ethics Service in an Australian Tertiary Hospital: Opportunities and Challenges Created by the Introduction of Voluntary Assisted Dying	Parallel 5.6
A224(PP)	Ethics Consults in Pediatric Intensive Care Units (PICU): Who, What, Where, When and Why?	Parallel 4.3
A229(PP)	Complicity in Clinical Ethics? The Role of Clinical Ethicists in a Hospital Committee on the Uninsured	Parallel 7.1
A230(PP)	Reconciling Business and Health Care Ethics in Practice: The Case of For-profit and Non-profit Nursing Homes	Parallel 3.3
A240(PP)	Healthcare Organizations, Quality Improvement, and Clinical Ethics	Parallel 3.3
A26(CS)	Making the (Business) Case for Clinical Ethics Support Services: Selling Ethics or Selling Out?	Parallel 7.6
A47(PN)	Engaging Tomorrow's and Current UK Healthcare Practitioners in Clinical Ethics Education	Parallel 6.6
A97(CS)	Navigating Internal and External Goods: Who is Responsible for His Care?	Parallel 7.6
KN1	Dignity and Decency: Personal Integrity and Decent Institutions	Plenary 1
KN3	A Needle in an Ethical Haystack: A Virtue Ethics Analysis	Plenary 3
KN5	Towards a virtuous clinic? The Dynamics of Character and Ethical Climate within the Clinical Organisation	Plenary 5

ORGANIZING CLINICAL ETHICS

Abstract ID	Title	Session
A125(PO)	10 Years of Clinical Ethics Consultation at the University Hospital Innsbruck	Poster-Display
A137(PP)	To Include or not to Include Patient Perspectives in Case Consultation Practices: Organizational Preference or Necessity?	Parallel 7.1
A146(PP)	Ethics Rounds and Clinical Ethics Consultation - Two of a Kind?	Parallel 7.1
A147(PO)	Transparency and Confidentiality: Redesigning Clinical Ethical and Legal Consultation	Poster-Display
A152(PP)	The Elephant in the Room for Clinical Ethics Training Programs: What Makes a Program Worthwhile?	Parallel 4.1
A173(PP)	It's the System! – What Preventive Ethics Can Contribute to the Quality of a Health Care Organization	Parallel 4.1
A198(PP)	Implementing Clinical Ethics: Expectations and Realities	Parallel 4.1
A238(PP)	Doing Clinical Ethics Collaboration Differently: A Working Event to Innovate Clinical Ethics Consultation	Parallel 7.1
A241(PP)	Clinical Ethics Informatics	Parallel 4.1
A36(PN)	Comparing and Contrasting Clinical Ethics Support and Clinical Ethics Consultation: Engaging Responsibility via Institutional Roles and Clinical Activities	Parallel 5.1
A82(PN)	What Can We Offer with the Resources Available for Clinical Ethics Support? Insight from 4 Services in Europe	Parallel 3.1
A85(PN)	The Relationship of Lawyers and Bioethicists in the Hospital Setting	Parallel 5.5

PRACTICING CLINICAL ETHICS AND HEALTHCARE MANAGEMENT

Abstract ID	Title	Session
A162(PO)	Mr. B Takes a Fall	Poster-Display
A166(PP)	Metrics of Ethics: Translating the Narrative of Healthcare Ethics Consultation the C-Suite	Parallel 2.1
A19(CS)	To Block or Not to Block? The Role of Puberty Blockers in a Young Person with a Non-binary Gender Identity	Parallel 7.2
A205(PP)	Ethical Lessons in Assisted Dying: Navigating a Non-Binary Path	Parallel 6.2
A206(PP)	How Can the Immediate Management of the Organisation Influence the Ethical Climate?	Parallel 1.2
A216(PP)	Behind the Numbers: Understanding Ethics Consultation Requests for Unrepresented Patients	Parallel 1.2
A234(PP)	Ethical Justification for Strike by Doctors in Kenya	Parallel 1.2
A63(PN)	Conflict on the Technology Cutting Edge: ECMO, CentriMags™ and the Definition of Death, Organizational Policy on End-of-Life Conflicts & Moral Distress	Parallel 2.2
KN2	The Pope Francis Formula — For Healthy and Ethical Leadership!	Plenary 2

PRACTICING CLINICAL ETHICS AND JURISPRUDENCE

Abstract ID	Title	Session
A130(PP)	Law, Policy and the Role of Clinical Ethics Committees	Parallel 4.2
A133(CS)	One Too Many: Is Foetal Reduction the same as Abortion?	Parallel 4.2
A138(PP)	Governance of Automated Image Analysis and Related Artificial Intelligence Applications in Healthcare	Parallel 5.2
A170(PO)	Doctor's Duty to Advise - the Singapore Experience	Poster-Display
A178(PP)	A Confucian Ethical Code to Tackle Challenges in Pricing	Parallel 3.2
A184(PP)	Why Ethics Consultants Should Break the Law	Parallel 3.2
A208(PP)	Institutional and Individual Responsibility in Health Care Organizations: Ethical and Legal Aspects	Parallel 5.2
A210(PP)	The Relationship between Ethics and Law: The Importance of Values	Parallel 3.2
A211(PP)	Duty of Care versus Duty of Confidence in Genetics: A Legal and Moral Tension	Parallel 5.2
A215(PP)	Why Ethics? The Cost and Confusion of Employing Traditional Ethics in a Health Care Organization	Parallel 6.2
A218(PP)	Ethical Challenges in Telecare: Reviewing Moral and Legal Frameworks for Remote Clinical Care	Parallel 5.2
A232(PP)	Organizational Ethics and Assisted Dying: Helping Hospitals to Implement Morally Controversial Legislation	Parallel 3.2
A75(CS)	Patient Autonomy – A Human Right with Moral Implications	Parallel 4.2

PRACTICING CLINICAL ETHICS AND ORGANIZATIONAL PSYCHOLOGY

Abstract ID	Title	Session
A114(CS)	So, Do We Really Need Doctors Anyway?	Parallel 5.3
A135(PO)	How Can Psychological Concerns be Smoothly Introduced into Clinical Ethics Education in Healthcare Organizations?	Poster-Display
A145(PO)	Challenges in the Management of Endoscopic Procedures	Poster-Display
A186(PP)	Methods for Collective Success and Resolutions: A Standardized Ethical Assessment Model to Facilitate the Consultation Process	Parallel 6.3
A204(CS)	When Does the “Why” Matter? Considering “Intent” in Clinical Ethics Consultation	Parallel 5.3
A212(PP)	Intuitions in Ethical Decision-Making Processes	Parallel 6.3
A233(PP)	Emotive Forces and Moral Distress: Can a Discussion about Medical Futility Save the Day?	Parallel 6.3
A239(PP)	Moral Distress in Hospital Health Personnel: A Topic for Clinical Ethics Consultation Services?	Parallel 6.3
A242(PO)	The Effect of Role Models on the Moral Behaviours and Attitudes of Medical Students	Poster-Display
A247(PP)	Relational Leadership in Healthcare Organisations	Parallel 4.6

PRACTICING CLINICAL ETHICS AS CONSULTATION

Abstract ID	Title	Session
A103(PO)	When Cancer Kids Say “No!”: Capacity, Oncology and Consent	Poster-Display
A104(PN)	Ethics Consultation in U.S. Hospitals: Current Practices and Perspectives of EC Practitioners	Parallel 2.5
A128(PP)	A Person-centered Point-of-care Tool for Clinical Ethics Consultations	Parallel 7.5
A132(PP)	Revising the Euro-MCD Instrument for Evaluating Outcomes of Moral Case Deliberation – Normative Reflections on Empirical Findings	Parallel 1.3
A134(PP)	Translating Clinical Ethics into Caring Practices in an Institution for the Intellectually Disabled: Empirical and Methodological Insights	Parallel 2.3
A136(PP)	Moral Deliberation in Bioethics: Method and Virtues	Parallel 7.5
A139(PP)	Does Ethics Consultation Simulation Impact Trainees’ Ability to Evaluate other Clinical Ethicists?	Parallel 2.1
A141(WS)	A Novel Approach to Training Your Ethics Committee	Parallel 3.5
A142(CS)	IVF for Sick Mothers	Parallel 1.5
A143(CS)	Facilitating Decision Making When the Patient's Autonomy is Compromised	Parallel 1.5
A154(WS)	Jail Care Ethics	Parallel 6.5
A155(PP)	A Seat at the Table: Exploring the Intersection of Race and Profession in Clinical Ethics Consultation	Parallel 1.3
A163(PP)	To Err Is Human: Mistakes in Clinical Ethics Consultation	Parallel 1.3
A167(PP)	Ethical Duties toward the Patient’s Family: A Theoretical Framework and the Contribution of Clinical Ethics Consultation	Parallel 1.3
A169(PP)	Defining the Role of Clinical Ethics Consultation in Pre-Transplant Recipient Assessment Practices	Parallel 7.5

PRACTICING CLINICAL ETHICS AS CONSULTATION

Abstract ID	Title	Session
A171(PP)	Is Ethical Climate an Outcome of Moral Case Deliberation? – Evaluation of Quality in Practice in the Eyes of Managers	Parallel 2.1
A172(PO)	Evaluation of Case Consultations: Lessons from 192 Consultation Protocols at Hannover Medical School	Poster-Display
A176(PO)	Scoping Review of the Factors of an Effective Clinical Ethics Consultation	Poster-Display
A177(PO)	Systematic Review of Core Training requirements and Curricula of CEC members	Poster-Display
A182(PP)	Systematic Review of Tools to Assess the Quality of Ethics Consultations	Parallel 2.3
A188(PP)	Apples to Oranges: Why Share Data in Health Care Ethics Consultation	Parallel 2.3
A191(PP)	Impact of Collusion in the Implementation of “Terminal Discharges” from an Acute Hospital and the Role of Welfare Model to Achieve Transparency of Care	Parallel 2.3
A199(PP)	Good Ethics Consultation in Chronic Illness – Overcoming Epistemic Injustice	Parallel 7.2
A222(PP)	The Practice of Balancing in Clinical Ethics Case Consultation	Parallel 7.2
A214(PO)	When Identities Intersect: Adapting an Intersectional Lens into Clinical Ethics Consultation Frameworks	Poster-Display
A231(PO)	Ethical Expertise and Evaluation of Clinical Ethics Support Services (CESS)	Poster-Display
A235(PP)	The Art of Being Directive without Being Directive: Requirements and Demands on Ethical Expertise in Psychiatric Clinical Ethics Consultation – Preliminary Results	Parallel 2.1
A70(PN)	This Is how WE Do It: New Roles, New Rules, and Knowledge Transfer for New Ethics Consultants	Parallel 6.1
A81(CS)	Ethics for Junior Doctors in Emergency Medicine	Parallel 1.5
A88(PO)	A Faith-Based Moral Challenge in Ethics Consultation	Poster-Display
A93(PN)	Does Age Matter? Clinical Ethics Case Review of Surrogate Decision-making from the Womb to Advanced Age	Parallel 4.5
A94(PN)	Fostering Quality of Ethics Support: NEON (A National Network on Ethics Support) as a Vehicle for Mutual Learning about CES Quality	Parallel 1.1
KN4	The Challenge of Educating Healthcare Ethics Consultants: Setting the Bar and Shooting for the Stars	Plenary 4

CONTRIBUTERS (in alphabetical order)

Name	Contributions	Name	Contributions
Abrams, Joshua	A85(PN)	Eves, Margot	A152(PP), A238(PP)
Adams, William	A139(PP)	Fanning, Joseph	A97(CS), A188(PP) A224(PP)
af Sandeberg, Margareta	A206(PP)	Feder, Katherine	A203(PP)
Agich, George	A240(PP)	Finder, Stuart	A36(PN) A70(PN)
Antolovich, Giuliana	A114(CS)	Firn, Janice	A203(PP)
Bahus, Marianne Klungland	A75(CS)	Fischer, Marion	A167(PP), A229(PP)
Bal, Roland	A151(PP)	Fleenor, David	A164(PO)
Bartholdson, Cecilia	A206(PP)	Ford, Paul	A238(PP)
Bartlett, Virginia	A216(PP), A70(PN)	Fox, Ellen	A104(PN)
Barua, Khokan	A175(PP)	Freund, Katja	A172(PO)
Berkman, Emily	A190(PP)	Friis, Pål	A75(CS)
Bliton, Mark	A36(PN)	Frye, John	A241(PP)
Bouthillier, Marie-Eve	A104(PN)	Fuscaldo, Giuliana	A130(PP)
Brand, Cordula	A198(PP), A212(PP)	Gallagher, Ann	KN3
Burmeister, Christiane	A198(PP)	Gallagher, Colleen	A160(PP)
Cagney, Hannah	A211(PP)	Gastmans, Chris	A116(CS)
Campbell, Louise	A247(PP)	Gather, Jakov	A235(PP)
Chan, Mei Yoke	A133(CS)	Gerrek, Monica	A149(PN), A154(WS)
Chandler, Lukas	A218(PP)	Gillam, Lynn	A127(PP), A222(PP) A115(CS)
Chew, Ming Xian Grace	A170(PO)	Gillen, Erny	KN2
Chowdhury, Akash Jatin	A175(PP)	Giudozzi, Yolande	A234(PP)
Chua, Eunice	A17(CS)	Groenewoud, Stef	A230(PP), A217(PP)
Clark, Jonna	A190(PP)	Grossi, Alessandra Agnese	A169(PP)
Coleman, Cynthia	A144(CS), A93(PN)	Haltaufderheide, Joschka	A235(PP), A231(PO)
Cook, E. David	A141(WS)	Hardardt, George E.	KN4
Corfield, Lorraine	A47(PN)	Harris, Kelly	A188(PP), A224(PP)
Crites, Joshua	A152(PP)	Harrison, Charlotte	A129(PP), A85(PN)
Crowell, Philip	A103(PO) A233(PP)	Hartman, Laura	A151(PP), A94(PN) A153(PP)
Cummins, Paul	A164(PO)	Hattori, Kenji	A135(PO)
Cunningham, Thomas	A188(PP)	Hayes, Barbara	A232(PP)
Dalle Ave, Anne	A167(PP), A229(PP)	Hester, D. Micah	A188(PP)
de Snoo-Trimpp, Janine	A132(PP), A134(PP)	Hider, Geraldine	A186(PP)
de Vet, Henrica	A132(PP)	Hingalagoda, Anusha	A127(PP)
De Vries, Martine	A147(PO)	Hirschmann, Jo	A164(PO)
Delany, Clare	A127(PP) A114(CS)	Ho, Anita	A205(PP)
Denier, Yvonne	A116(CS)	Ho, Calvin W. L.	A138(PP)
DeRenzo, Evan	A63(PN)	Hoepfer, Donald	A186(PP)
Dhaene, Lieve	A116(CS)	Horner, Claire	A214(PO)
Dhai, Ames	A234(PP)	Horsburgh, Cristie	A148(PP), A152(PP)
Diekema, Douglas	A190(PP)		
Eijkholt, Marleen	A137(PP), A147(PO)		

Name	Contributions	Name	Contributions
Hulkower, Adira	A202(CS), A204(CS)	Molewijk, Bert	A153(PP), A94(PN)
Hurst, Samia A.	A229(PP), A167(PP)		A36(PN), A132(PP)
Hussain, Bisma	A242(PO)		A134(PP)
Hynds, James	A163(PP)	Moodley, Keymanthri	A110(CS)
Ieong, Michael	A166(PP), A85(PN)	Moore, Bryanna	A179(PP)
Jameson, Kim	A205(PP)	Morley, Georgina	A148(PP)
Janet, Malek	A162(PO)	Moskop, John	A88(PO)
Jankowski, Jane	A238(PP)	Muhudhia, Stephen Ombok	A234(PP)
Jerome, Karen	A63(PN)	Müller, Uta	A208(PP), A198(PP)
Jeurissen, Patrick	A230(PP)	Nadolny, Stephan	A231(PO)
Joolae, Soodabeh	A205(PP)	Neitzke, Gerald	A172(PO)
Jox, Ralf J.	A167(PP), A168(PP)	Nicoli, Federico	A169(PP)
	A229(PP), A104(PN)	Notini, Lauren	A19(CS)
Juckel, Georg	A235(PP)	Novitzky, Peter	A138(PP)
Kersten, Alexander	A146(PP)	Ong, Yun Ting	A177(PO), A176(PO)
Kim, Ahra	A188(PP), A224(PP)		A182(PP)
Kirchhoffer, David	A205(PP)	Ordoñez, Jose J	A136(PP)
Kling, Sharon	A110(CS)	Palamaru, Andreea Luiza	A145(PO)
Ko, Danielle	A223(PP), A232(PP)	Pang, Ken	A19(CS)
Koch, Peter	A184(PP)	Paola, Frederick	A209(PO)
Kole, Jos J.	KN5, A217(PP)	Parkhouse, Julia	A47(PN)
Kondrat, Andy	A216(PP), A70(PN)	Pegoraro, Renzo	A82(PN)
Krishna, Lalit	A128(PP), A176(PO)	Penttila, Jane	A149(PN)
	A177(PO), A182(PP)	Pergert, Pernilla	A206(PP)
Kruse, Florian	A230(PP)	Picozzi, Mario	A169(PP)
Kuehlmeyer, Katja	A239(PP)	Pratt, Bridget	A232(PP)
Lantos, John	A179(PP)	Preis, Anne	A115(CS)
Laventhal, Naomi	A203(PP)	Propper, Rebecca	A224(PP)
Lee, Hugh	A215(PP)	Radha Krishna, Lalit Kumar	A191(PP)
Lewis-Newby, Mithya	A190(PP)	Radwany, Steven	A149(PN)
Liégeois, Axel	A210(PP)	Raho, Joseph	A163(PP)
Loke, Hsi-Yen	A170(PO)	Rajasegaran, Kumudhini	A133(CS)
Lorenzo, David	A136(PP)	Ranisch, Robert	A198(PP)
Mabel, Hilary	A238(PP)	Ransom, Hellen	A155(PP), A215(PP)
Machin, Laura	A26(CS), A47(PN)	Reiter-Theil, Stella	A82(PN), A173(PP)
Malek, Janet	A157(PP)		A142(CS)
Mann, David	A144(CS), A93(PN)	Riccabona, Ursula	A125(PO)
McCallum, Zoe	A114(CS)	Rotaru, Tudor-Stefan	A145(PO)
McDougall, Rosalind	A223(PP), A232(PP)	Sabin, James	A129(PP)
	A222(PP), A19(CS)	Salari, Salomeh	A203(PP)
McGrath, Norine	A63(PN)	Schildmann, Jan	A231(PO), A235(PP)
Mertz, Marcel	A172(PO)	Schipper, Karen	A134(PP)
Mesel, Terje	A75(CS)	Schirokauer, Oliver	A154(WS), A149(PN)
Milner, Kate	A114(CS)	Schmidt, Kurt	A183(PO)
Mitchell, Lisa	A130(PP)	Schmitz, Dagmar	A146(PP)

Name	Contributions	Name	Contributions
Schürmann, Jan	A173(PP), A142(CS)	van Baarle, Eva	A94(PN)
Sedmak, Clemens	KN1	Van den Hoogen, Frank	A217(PP)
Shadbolt, Cade	A222(PP)	van Gorp, Jelle	A134(PP)
Shah, Nimesh	A63(PN)	Verstegen, Pleuntje	A217(PP)
Shivananda, Sushma	A191(PP)	Vollmann, Jochen	A231(PO), A36(PN)
Silén, Marit	A171(PP)		A235(PP)
Slowther, Anne	A82(PN)	Voo, Teck Chuan	A178(PP)
Smidt-Jernstrom, Kurt	A143(CS)	Walker, Robert	A209(PO)
Smith, Anglea	A47(PN)	Wallenburg, Iris	A151(PP)
Sontag, David	A85(PN)	Wallner, Jürgen	A70(PN), A82(PN)
Soon, Derek	A138(PP)	Wasson, Katherine	A139(PP), A141(WS)
Spruyt, Carolina	A81(CS)	Webster, Laura	A93(PN), A144(CS)
Sraman, Shimo	A175(PP)		A70(PN)
Stühlinger, Verena	A125(PO)	Weidmann-Hügler, Tatjana	A199(PP)
Svantesson, Mia	A171(PP), A132(PP)	Weise, Kathryn	A152(PP)
Tan, Yung Ying	A191(PP)	Wetterauer, Charlotte	A142(CS)
Telfer, Michelle	A19(CS)	Wickins, Jeremy	A211(PP)
Toader, Elena	A145(PO)	Widdershoven, Guy	A151(PP)
Toh, Ying Pin	A128(PP), A191(PP)	Winkler, Laura	A142(CS)
Touwen, Dorothea	A147(PO)	Wong, Gabriel Hong Zhe	A178(PP), A138(PP)
Trimp, Janine	A153(PP)	Würth, Kristina	A142(CS)
Turnbull, Jessica	A224(PP)	Yoon, Nicholas Yue Shuen	A176(PO), A182(PP)

PRACTICAL INFORMATION

PRESENTERS

All oral presenters should report to the designated room at least 15 minutes before their presentation session is due to begin. Computer files for presentation can be uploaded in the designated room. Please bring your file(s) on a USB memory-stick. All computers are equipped with Microsoft PowerPoint for Windows.

REGISTRATION DESK

The Registration Desk will be opened at following times:

Thursday, 23 May 2019	08:00 - 18:00 hrs
Friday, 24 May 2019	08:00 - 18:00 hrs
Saturday, 25 May 2019	08:00 - 12:00 hrs

GENERAL INFORMATION

Disabled Access

All rooms that are being used are wheelchair accessible. If you need any assistance, please contact the conference registration desk or the hotel reception.

First Aid

If you need medical assistance, please contact the conference registration desk or the hotel reception.

Wi-fi

Will be available during the Conference.

CONFERENCE LOCATION

Hotel Hilton am Stadtpark

Am Stadtpark 1
1030 Vienna, Austria

ORGANIZER

Hospitaller Order of St. John of God, Austria

Taborstraße 16
1020 Vienna, Austria

CONGRESS MANAGEMENT

admicos.Congress Incentive GmbH

Skodagasse 14-16
1080 Vienna, Austria

SPONSORS






ICCEC 2020

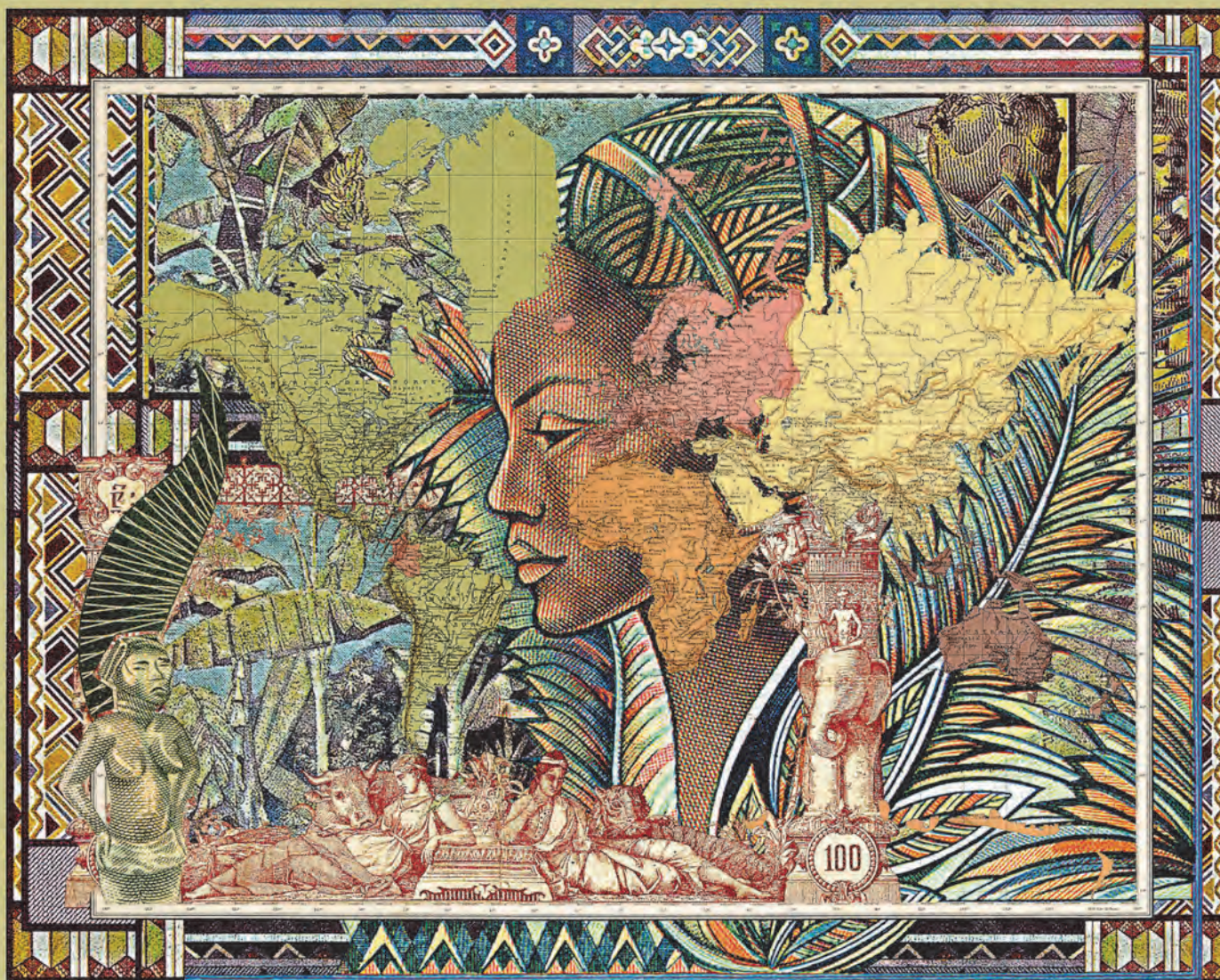
SOUTH AFRICA • CAPE TOWN • Spier Estate (Stellenbosch)

31 March – 3 April

16th Annual International
Conference on Clinical
Ethics & Consultation

 @ICCEC2020
 @ICCEC2020
 www.iccec2020.co.za

Beyond Borders: exploring new frontiers



Figures 1889, Planisferio © Malala Andrialavidrazana, 2015